

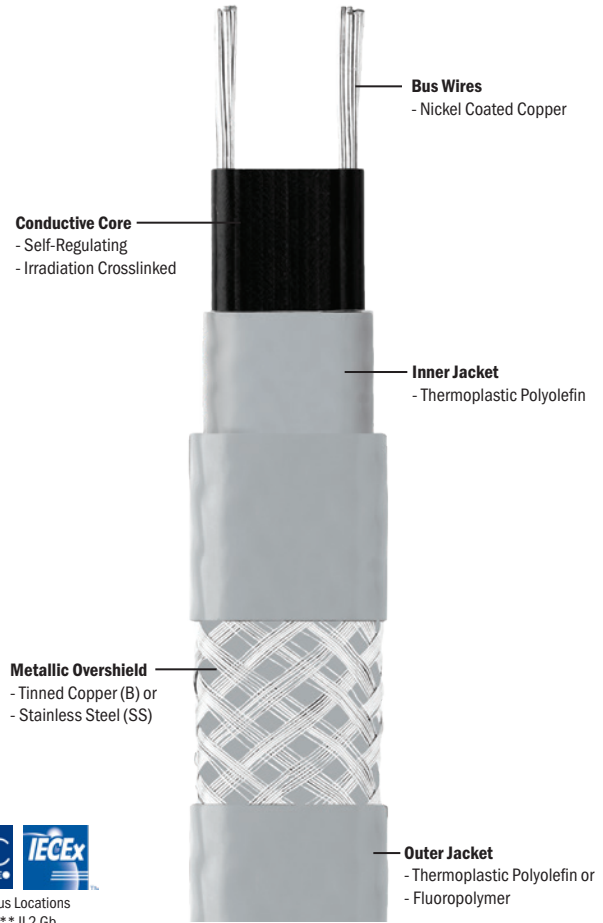
SELF-REGULATING HEATING CABLE

**Self-Regulating Heating Cable
(SLCAB Series)**

- ▶ **Ideal for freeze protection and low-temperature process maintenance up to 150°F (65°C)**
- ▶ **Automatically adjusts heat output based on surface and ambient temperatures**
- ▶ **Safe to overlap and insulate**
- ▶ **Moisture, chemical, and flame resistant**
- ▶ **Can be cut-to-length and terminated in the field**

Specifications:

Maximum Continuous Maintenance Temperature: 150°F (65°C)
Intermittent Exposure Temperature Range: -20°F to 185°F (-29°C to 85°C)
Maximum Power Output at 50°F (10°C): 3, 5, 8, 10 W/ft (10, 16, 26, 33 W/m)
Supply Voltages: 110-120 VAC or 208-277 VAC
Bus Wires: 16 AWG nickel coated copper wire
Braid Resistance:
 Tinned copper: 0.003 Ω/ft (0.009 Ω/m)
 Stainless steel: 0.125 Ω/ft (0.410 Ω/m)
Bend Radius: 0.5 in (12 mm)



Ordinary Locations
 Hazardous (Classified) Locations
 Class I, Division 1[†] and 2, Groups B, C, D
 Class II, Division 2, Groups F, G
 Class III, Division 1 and 2
 3, 5, 8 W/ft T6
 10 W/ft T5



Ordinary Locations 2E[†], 3(A,B,C), 5(A,B)
 Hazardous (Classified) Locations
 Class I, Division 1 and 2, Groups B, C, D
 Class II, Division 1 and 2, Groups E, F, G
 Class III, Division 1 and 2
 3, 5, 8 W/ft T6
 10 W/ft T5



Hazardous Locations
 II 2GD Gb
 Ex e IIC T**
 Ex tb IIIC T**°C Db
 **3, 5, 8 W/ft T5/T85°C
 **10 W/ft T4/ T100°C



Hazardous Locations
 Ex e IIC T** II 2 Gb
 Ex tb IIIC T**°C Db
 **3, 5, 8 W/ft T5/T85°C
 **10 W/ft T4/ T100°C



**Moisture and
Chemical
Resistant**



**Maintenance
Temperatures
Up to
150°F (65°C)**

Approvals valid only when used with appropriate heating cable and installation accessories, and installed in accordance with all applicable instructions, codes, and regulations.

[†]CI/D1 approval for BF only. Contact a BriskHeat representative for information on Division I hazardous location systems.

Outer Layer Options

Product Type	Description	Nominal Dimensions [thickness x width] in (mm)	Shipping Weight: Per 500-ft (152m) spool	Purpose
SLCAB-B	Tinned Copper Metal Braid	0.2 x 0.4 (6 x 11)	40 (18)	For use in dry environments
SLCAB-BP	Tinned Copper Metal Braid with Thermoplastic Polyolefin Overjacket	0.3 x 0.6 (7 x 15)	48 (22)	For use in wet or weak chemical environments (i.e. weak acids)
SLCAB-BF	Tinned Copper Metal Braid with Fluoropolymer Overjacket	0.3 x 0.6 (7 x 15)	48 (22)	For use in strong chemical environments (i.e. strong acids)
SLCAB-SS	Stainless Steel Metal Braid	0.2 x 0.4 (6 x 11)	40 (18)	More resistant to rust and corrosion than Tinned Copper Metal braid.

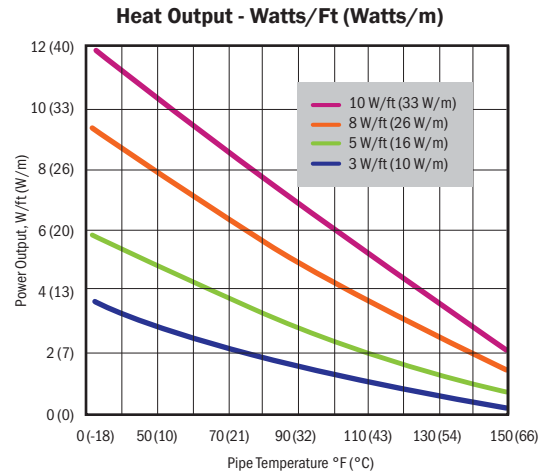
SELF-REGULATING HEATING CABLE

Self-Regulating Heating Cable continued (SLCAB Series)

Maximum Circuit Length in ft (m)

Heat Cable Type	Circuit Breaker Size	Start-up Temperature		
		50°F (10°C)	0°F (-18°C)	-20°F (-29°C)
SLCAB3120	15 amp	300 (91)	200 (61)	180 (55)
	20 amp	-	270 (82)	230 (70)
	30 amp	-	330 (100)	330 (100)
SLCAB3240	15 amp	660 (201)	410 (125)	360 (110)
	20 amp	-	560 (171)	480 (146)
	30 amp	-	660 (201)	660 (201)
SLCAB5120	15 amp	230 (70)	150 (46)	130 (40)
	20 amp	270 (82)	200 (61)	175 (53)
	30 amp	-	270 (82)	260 (79)
SLCAB5240	15 amp	460 (140)	300 (91)	260 (79)
	20 amp	540 (164)	400 (122)	345 (105)
	30 amp	-	540 (164)	520 (158)
SLCAB8120	15 amp	150 (46)	95 (29)	85 (26)
	20 amp	200 (61)	125 (38)	100 (30)
	30 amp	210 (64)	190 (58)	170 (52)
	40 amp	-	210 (64)	210 (64)
SLCAB8240	15 amp	295 (90)	195 (59)	170 (52)
	20 amp	390 (119)	250 (76)	225 (68)
	30 amp	420 (128)	375 (114)	340 (104)
	40 amp	-	420 (128)	420 (128)
SLCAB10120	15 amp	115 (35)	70 (21)	60 (18)
	20 amp	150 (46)	95 (29)	85 (26)
	30 amp	180 (55)	145 (44)	120 (36)
	40 amp	-	180 (55)	165 (50)
SLCAB10240	15 amp	230 (70)	150 (46)	130 (40)
	20 amp	305 (93)	200 (61)	175 (53)
	30 amp	360 (110)	300 (91)	260 (79)
	40 amp	-	360 (110)	360 (110)

Note: Special consideration must be given for the circuit breaker due to the high initial in-rush currents.



Voltage Adjustment Factor

Product Type	Output Adjustment Factor	
	208 VAC	277 VAC
SLCAB3240	0.75	1.28
SLCAB5240	0.86	1.16
SLCAB8240	0.91	1.10
SLCAB10240	0.93	1.08

Ordering Information:

Part Number Matrix

SLCAB	3	120	BF
--------------	----------	------------	-----------

Watts/ft: _____

3, 5, 8, 10

Voltage: _____

120 - (110 - 120 VAC), 240 - (208 - 277 VAC)

Outer Layer: _____

B- (Tinned Copper Metal Braid)

BP- (Tinned Copper Metal Braid with Thermoplastic Polyolefin)

BF- (Tinned Copper Metal Braid with Fluoropolymer Overjacket)

SS- (Stainless Steel Metal Braid)

Power Connection/Termination Kits and Accessories Available.



See pages 1-18 through 1-21 for power connection/termination kits including the **NEW ATEX APPROVED Kit**.

SELF-REGULATING HEATING CABLE

Mid-Temperature Self-Regulating Heating Cable (SLMCAB Series)

- ▶ **Ideal for freeze protection and mid-temperature process maintenance up to 250° F (120° C)**
- ▶ **Automatically adjusts heat output based on ambient and surface and ambient temperatures**
- ▶ **Safe to overlap and insulate**
- ▶ **Moisture, chemical, and flame resistant**
- ▶ **Can be cut-to-length and terminated in the field**

Specifications:

Maximum Continuous Maintenance Temperature: 250°F (120°C)
Intermittent Exposure Temperature Range: -40°F to 366°F (-40°C to 185°C)
Nominal Power Output at 50° F (10° C): 5,10,15 W/ft (16,33,49 W/m)
Supply Voltages: 110-120 VAC or 208-277 VAC
Bus Wires: 16 AWG nickel coated copper wire
Braid Resistance: Tinned Copper 0.003 Ω/ft (0.009 Ω/m)
Bend Radius: 0.5 in (12 mm)



Ordinary Locations
 Hazardous (Classified) Locations
 Class I, Division 1¹ and 2, Groups B, C, D
 Class II, Division 2, Groups F, G
 Class III, Division 2
 5, 10, 15 W/ft T3



Ordinary Locations 3(A,B,C), 5(A,B)
 Hazardous (Classified) Locations
 Class I, Division 1 and 2, Groups B, C, D
 Class II, Division 1 and 2, Groups E, F, G
 Class III, Division 1 and 2
 5, 10, 15 W/ft T3



Hazardous Locations
 II 2 GD
 Ex e IIC T3 Gb
 Ex tb IIIC T195°C Db



Hazardous Locations
 Ex e IIC T3 Gb
 Ex tb IIIC T195°C Db

Approvals valid only when used with appropriate heating cable and installation accessories, and installed in accordance with all applicable instructions, codes, and regulations.

¹CI/D1 approval for BF only. Contact a BriskHeat representative for information on Division I hazardous location systems.



Moisture and Chemical Resistant



Maintenance Temperatures Up to 250° F (120° C)

Outer Jacket Options:

Type	Description	Nominal Dimensions [thickness x width] in (mm)	Purpose/Use
B	Tinned Copper Metal Braid	0.15 x 0.54 (4 x 14)	Dry Environments
BF	Tinned Copper Metal Braid with Fluoropolymer Outer Jacket	0.20 x 0.58 (5 x 15)	Wet or Harsh Chemical Environments

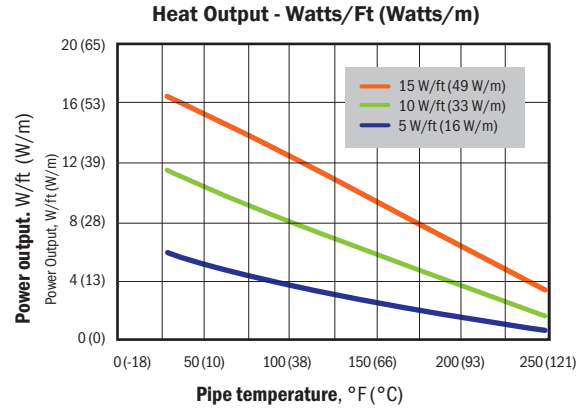
SELF-REGULATING HEATING CABLE

Mid-Temperature Self-Regulating Heating Cable (SLMCAB Series)

Specification/Application Information:

Maximum Circuit Length ft (m)

Heat Cable Type	Circuit Breaker Size	Start-up Temperature		
		50°F (10°C)	0°F (-18°C)	-40°F (-40°C)
SLMCAB5120	15 amp	150 (46)	135 (41)	130 (40)
	20 amp	200 (61)	180 (55)	170 (52)
	30 amp	240 (73)	220 (67)	210 (64)
SLMCAB5240	15 amp	250 (76)	230 (70)	220 (67)
	20 amp	330 (100)	305 (67)	295 (90)
	30 amp	480 (146)	440 (92)	420 (128)
SLMCAB10120	15 amp	90 (27)	85 (26)	80 (24)
	20 amp	120 (36)	110 (33)	105 (32)
	30 amp	180 (55)	165 (50)	160 (49)
SLMCAB10240	15 amp	140 (43)	130 (40)	125 (38)
	20 amp	190 (58)	175 (53)	170 (52)
	30 amp	280 (85)	260 (79)	250 (76)
SLMCAB15120	15 amp	70 (21)	65 (20)	60 (18)
	20 amp	90 (27)	85 (26)	80 (24)
	30 amp	130 (40)	125 (38)	120 (36)
SLMCAB15240	15 amp	100 (30)	95 (29)	90 (27)
	20 amp	135 (41)	125 (38)	120 (36)
	30 amp	200 (61)	185 (56)	180 (55)



Voltage Adjustment Factor

Product Type	Output Adjustment Factor	
	208 VAC	277 VAC
SLMCAB5240	0.78	1.25
SLMCAB10240	0.86	1.16
SLMCAB15240	0.92	1.09

Note: Special consideration must be given for the circuit breaker due to the high initial in-rush currents.

Ordering Information:

Part Number Matrix

SLMCAB 5 120 BF

Watts/ft: _____
5, 10, 15

Voltage: _____
120- (110 - 120 VAC), 240- (208 - 277 VAC)

Outer Layer: _____
B- (Tinned Copper Metal Braid)
BF- (Tinned Copper Metal Braid with Fluoropolymer Overjacket)

Power Connection/Termination Kits and Accessories Available.



See pages 1-18 through 1-21 for power connection/termination kits including the **NEW ATEX APPROVED Kit**.

SELF-REGULATING HEATING CABLE

FM Approved SLCAB and SLMCAB Connection/Termination Kits



Ordinary Locations
Hazardous (Classified) Locations
Class I, Division 1† and 2, Groups B, C, D
Class II, Division 2, Group F, G
Class III, Division 2

Approvals valid only when used with appropriate heating cable and installation accessories, and installed in accordance with all applicable instructions, codes, and regulations.

† Contact a BriskHeat representative for information on Division I hazardous location systems.



SLCABUC Universal Connection Kit
(junction box sold separately)



SLCABKC End Seal Kit



SLCABSK Splice Kit

Ordinary or Class I Division 2 Locations Kits – FM Approved

Part No.	Kit	Compatible with	Enough to Complete	Kit Contents	Required Accessories
SLCABUC	SLCAB Universal Connection Kit - FM Approved	SLCAB Heating Cable	One input connection and two end terminations; or one input power splice	<ul style="list-style-type: none"> (1) 0.75 in (19 mm) NPT pipe standoff (2) Ring terminals (4) Large, insulated crimp connectors (2) Small, insulated crimp connectors (2) Pipe straps – for 2 in to 6 in (51 mm to 152 mm) O.D. pipes (1) 6 in (152 mm) shrink sleeve (1) Ground screw (1) 3 oz (89 ml) tube of RTV sealant (1) Roll of fiberglass adhesive tape (1) Caution label 	<ul style="list-style-type: none"> 0.75 in (19 mm) NPT junction box –with appropriate approvals. See selection of junction boxes on page 1-21
SLCABSK	SLCAB Splice Kit - FM Approved	SLCAB Heating Cable	Ten tee splices or ten input power connections	<ul style="list-style-type: none"> (20) Large yellow crimp connectors (20) Large blue crimp connectors (10) Heat shrink tubes (1) 3 oz (89 ml) tube of RTV sealant 	
SLMCABUC	SLMCAB Universal Connection Kit - FM Approved	SLMCAB Heating Cable	One input connection and two end terminations; or one input power splice; or one tee splice	<ul style="list-style-type: none"> (1) 0.75 in (19 mm) NPT pipe standoff (2) Ring terminals (3) Large, insulated crimp connectors (2) Small, insulated crimp connectors (2) Pipe straps – for 2 in to 6 in (51 mm to 152 mm) O.D. pipes (2) End boots (1) Ground screw (1) 3 oz (89 ml) tube of RTV sealant (1) Roll of fiberglass adhesive tape (1) Caution label 	<ul style="list-style-type: none"> 0.75 in (19 mm) NPT junction box –with appropriate approvals. See selection of junction boxes on page 1-21
SLCABKC	SLCAB End Seal Kit - FM Approved	SLCAB Heating Cable	Ten end terminations	<ul style="list-style-type: none"> (10) Heat shrink tubes 	
SLMCABKC	SLMCAB End Seal Kit - FM Approved	SLMCAB Heating Cable	Ten end terminations or ten input power connections	<ul style="list-style-type: none"> (10) End boots (4) Rolls of fiberglass adhesive tape (1) 3 oz (89 ml) tube of RTV sealant 	

SELF-REGULATING HEATING CABLE

FM Approved SLCAB and SLMCAB Connection/Termination Kits continued



SLCABUC1 Class I, Division 1 Power Connection Kit



SLCABKC1 Class I, Division 1 End Termination Kit

Class I Division 1 Kits – FM Approved

Part No.	Kit	Compatible with	Enough to Complete	Kit Contents
SLCABUC1	Class I, Division 1 SLCAB and SLMCAB Power Connection Kit - FM Approved	SLCAB and SLMCAB Heating Cable	One power connection. C1D1 junction box included	<ul style="list-style-type: none"> • (1) Junction box with cover • (1) Seal fitting • (1) Standoff "T" fitting • (1) 0.75 in (19 mm) NPT threaded plug • (2) 16-14 AWG insulated butt connector • (1) Closed end crimp connector • (1) 3 oz (89 ml) tube of RTV sealant • (1) Sealing compound • (2) Pipe straps – for 2 in to 6 in (51 mm to 152 mm) O.D. pipes • (1) Roll of fiberglass adhesive tape • (1) Caution label
SLCABKC1	Class I, Division 1 SLCAB and SLMCAB End Termination Kit - FM Approved	SLCAB and SLMCAB Heating Cable	One end termination. C1D1 junction box included	<ul style="list-style-type: none"> • (1) Junction box with cover • (1) Seal fitting • (1) Standoff "T" fitting • (2) 0.75 in (19 mm) NPT threaded plug • (1) 12-10 AWG spade tongue terminal • (1) Silicone rubber boot • (1) Silicone sealant • (1) Sealing compound • (2) Pipe straps – for 2 in to 6 in (51 mm to 152 mm) O.D. pipes • (1) Roll of fiberglass adhesive tape • (1) Caution label

SELF-REGULATING HEATING CABLE

CSA Approved SLCAB and SLMCAB Connection/Termination Kits



Ordinary Locations 2E*, 3(A,B,C), 5(A,B)
Hazardous (Classified) Locations
Class I, Division 1 and 2, Groups B, C, D
Class II, Division 1 and 2, Groups E, F, G
Class III, Division 1 and 2

Approvals valid only when used with appropriate heating cable and installation accessories, and installed in accordance with all applicable instructions, codes, and regulations.

*2E approved for 3 watts/ft and 5 watts/ft only.



SLCABUC-CSA-M Universal Connection Kit
(Junction Box sold separately)



SLCABEND-CSA-2
End Seal Kit



SLCAB-CSA-D1
Class I, Division 1 Accessory Kit

Part No.	Kit	Compatible with	Enough to Complete	Kit Contents	Required Accessories
SLCABUC-CSA-M	Universal Connection Kit - CSA Approved	SLCAB and SLMCAB series heating cable	One input connection and one end termination. Splices and power input splices can be made using two kits.	<ul style="list-style-type: none"> (1) Connector body (1) Connector cap (2) Connector gland washers (1) Grommet (1) Termination boot (1) Strain relief grip (1) Standoff bracket (1) Locknut (1) Termination block (1) Roll of fiberglass adhesive tape (1) Pipe strap –for 2 in to 6 in (51 mm to 152 mm) O.D. pipes (1) Ring tongue terminal (1) End seal kits – contents listed below 	<ul style="list-style-type: none"> 0.75 in NPT junction box – with appropriate approvals SLCAB-CSA-D1 – if installed in Class I, Division 1 environment
SLCABEND-CSA-2	End Seal Kit - CSA Approved	SLCAB and SLMCAB series heating cable	One end termination	<ul style="list-style-type: none"> (1) End cap (1) Clamp (1) Sealant (1) Crimp sleeve 	<ul style="list-style-type: none"> SLCAB-CSA-D1 – if installed in Class I, Division 1 environment
SLCAB-CSA-D1	Accessory Kit for Class I, Division 1 - CSA Approved	SLCABUC-CSA-M or SLCABEND-CSA-2 Kit	For use with one SLCABUC-CSA-M or SLCABEND-CSA-2 Kit. Required accessory for installations in Class I, Division 1 hazardous-area locations.	<ul style="list-style-type: none"> (1) C1D1 Junction box (1) C1D1 End seal 	<ul style="list-style-type: none"> One of the above kits

SELF-REGULATING HEATING CABLE

ATEX Approved SLCAB and SLMCAB Connection/Termination Kits



Hazardous Locations
II 2GD
Ex eb IIC Gb
Ex tb IIIC Db
Service temperatures = -34°C to +110°C

Approvals valid only when used with appropriate heating cable and installation accessories, and installed in accordance with all applicable instructions, codes, and regulations.

NEW!

Part No.	Kit	Compatible with	Enough to Complete	Kit Contents	Required Accessories
SLCABUC-EU	Power Connection / End Termination Kit – ATEX Approved	SLCAB and SLMCAB series heating cable	Either one input connection or one end termination	<ul style="list-style-type: none"> (1) Pipe Standoff (1) Sealing grommet – large hole (1) Sealing grommet – small hole (1) Sealing gasket (1) Termination boot (1) Shrink tube 0.5 in x 5.5 in (12 mm x 140 mm) (1) Tube of RTV silicone sealant (1) Lock ring (1) Adaptor (for installation on pipes smaller than 1 in (25 mm) Nylon zip tie (1) End boot 	<ul style="list-style-type: none"> ATEX / IECEx Approved Junction Box

Junction Boxes and Monitor Light Kits

Monitor Light Kits

Provides an LED end of circuit continuity indications. NEMA 3R for ordinary locations. Compatible with all BriskHeat heating cables. Requires a lead termination kit. Part No. **SLCABLP**

Voltage	Part No.
120	MLK1001
240	MLK2001



MLK1001
Monitor Light Kit

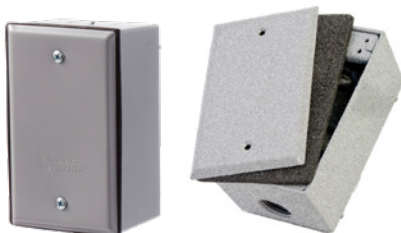
More accessories on page 1-34

Junction Boxes

Type	Approvals / Ratings	Dimensions in (mm)	Thread Size in (mm) NPT	Part No.
3 hub metallic junction box with 2 plugs and watertight cover	UL / CSA for ordinary locations NEMA 3R rated	2 x 4.5 x 2.75 (51 x 114 x 70)	0.50 (13)	JBM050
			0.75 (19)	JBM075
			1.00 (25)	JBM100
7 hub cast aluminum junction box with 6 plugs and watertight cover	UL/ CSA for Hazardous Areas. CI D1 & 2 Groups B,C,D. CII D1 Groups E,F,G	4.6 x 4.6 x 3.5 (118 x 118 x 89)	0.75 (19)	JBH075
			1.00 (25)	JBH100

Replacement plugs for 7 hub cast aluminum junction box

Thread Size in (mm) NPT	Part No.
0.75 in (19 mm)	P075
1.00 in (25 mm)	P100



JBM075
3 Hub Ordinary Locations Junction Box



JBH075
7 Hub Class I Division 1 Locations Junction Box